



Application method

Coating with Prisma Steinprotektor

A coating serves to protect flooring from mechanical loads, makes it easier to clean and helps to protect and retain the value of floor coverings. A coating can only be applied to clean, dry and stripped or intensively cleaned flooring.



Step 1: Weather and general information

High levels of air humidity: longer drying time!

Low air humidity and high temperatures: drying time too short!



Avoid draughts Switch off air conditioning and underfloor heating.

Residual moisture in the flooring can cause the maintenance film to powder.



Step 2: Prepare the coating

Always work towards the door and never away from it! Always use coatings wet on wet! Shake the canister well and pour approx. 250 ml of the coating onto the floor. Absorb the product with an applicator and immediately spread thinly using a figure of 8 movement.

Tip!

To pour the product without dripping, simply hold the canister at an angle. Always keep a cloth to hand to wipe up drips.

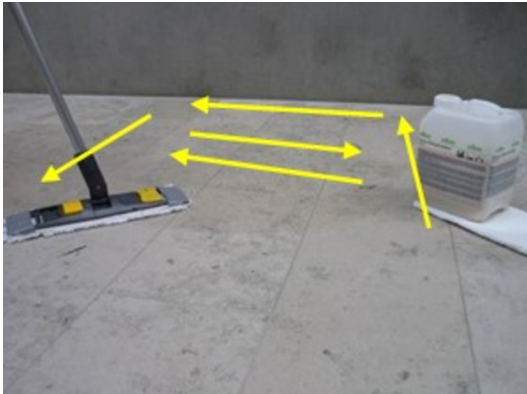


The safety advice and instructions for use on the containers, the product information and the safety data sheet must be observed. Please also observe the cleaning and maintenance recommendations of the manufacturers as well as the instruction manual of the machines and equipment used.



Application method

Coating with Prisma Steinprotektor



Step 3: Apply the coating

Always work towards the door and never away from it! Always use coatings wet on wet! Absorb the product with an applicator and immediately spread using a figure of 8 movement. Add more product if needed and use immediately. Do not walk on the surfaces until fully dry.



Step 4: Drying time

Leave the coating to dry for 30–90 minutes, depending on the weather and the product used. Only then apply the next layer. During the drying time, keep the mop heads in a plastic bag to prevent the coating from drying out. Carefully seal the canister.



Step 5: Clean the devices

Clean the application tools with a damp cloth. Rinse the mops with clear water and then wash in the washing machine.



The safety advice and instructions for use on the containers, the product information and the safety data sheet must be observed. Please also observe the cleaning and maintenance recommendations of the manufacturers as well as the instruction manual of the machines and equipment used.



Application method

Coating with Prisma Steinprotektor



Step 6: Polishing

The dried layer of maintenance film must be compacted through polishing with a high-speed machine (approx. 1,000 rpm). Run a high-speed machine with a suitable polishing pad over the floor in even, overlapping strokes until a shine appears.



The safety advice and instructions for use on the containers, the product information and the safety data sheet must be observed. Please also observe the cleaning and maintenance recommendations of the manufacturers as well as the instruction manual of the machines and equipment used.