



## Application method Intermittent maintenance

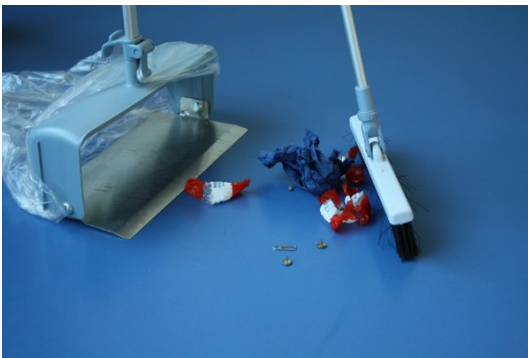
**Parquet and laminate floorings are sensitive to moisture!**

Excessively wet wiping and standing water can damage the wood surface!



### Step 1: Preparation

Stack furniture where necessary. Sweep or use a damp cloth (gauze cloth) to remove coarse, loose dirt.



### Step 2: Dose, prepare ready-to-use solution

First add water, then add the correct amount of detergent, following the dosage instructions on the label. Always use cold water!

Follow operating instructions. Wear personal protective equipment.



The safety advice and instructions for use on the containers, the product information and the safety data sheet must be observed. Please also observe the cleaning and maintenance recommendations of the manufacturers as well as the instruction manual of the machines and equipment used.



## Application method

# Intermittent maintenance



### Step 3: Wipe the surface systematically

Place warning signs!

Submerge mop in a blue bucket and wring out. Wipe the edge areas first, then clean the surfaces in overlapping loops (figures of 8). Rinse the dirty mop in the red bucket and wring out. Then submerge in the blue bucket, wring out and wipe the next section of floor.



### Step 4: Clean tools

Dispose of the dirty solution correctly, rinse out the dirt and freshwater tank and then clean with a damp cloth. Clean the rough dirt and freshwater filters. Open the machine lid and allow the machine to dry.



The safety advice and instructions for use on the containers, the product information and the safety data sheet must be observed. Please also observe the cleaning and maintenance recommendations of the manufacturers as well as the instruction manual of the machines and equipment used.