



## Application method

# Sealing with Kiehl-Legnodur-protect color

### Overview of required Kiehl products, machines and tools

Partial step: Polymer stripping:

- ▲ Personal protective equipment
- ▲ Covering material
- ▲ Rotary floor machine, pad holder, brush, brown pads, Veroclean-plus Express stripper, measuring cup
- ▲ Wet vacuum cleaner, wet mop trolley, hand pad holder/pads, spatula

Partial step: Scrape damaged areas

- ▲ Sandpaper, 3M 760 hybrid filler, dustpan, silicon gun, spatula, kitchen towel

Partial step: Sand the flooring

- ▲ Personal protective equipment
- ▲ Covering material
- ▲ Rotary floor machine, pad holder, vacuum attachment, Kiehl-Woodmaster-Pad 100, hand sander
- ▲ Vacuum cleaner, microfibre mop

Partial step: Apply Kiehl-Legnodur-protect color

- ▲ Personal protective equipment
- ▲ Covering material
- ▲ Kiehl-Legnodur-protect color, Kiehl-Durator, large/small sealing roller, large/small bracket, telescopic pole, flat-headed brush

Partial step: Apply Kiehl-Legnodur-protect

- ▲ Personal protective equipment
- ▲ Covering material
- ▲ Kiehl-Legnodur-protect, Kiehl-Durator, large/small sealing roller, large/small bracket, telescopic pole, flat-headed brush, cutter knife

### Partial step: Polymer stripping

Prior to treating resilient floorings with Kiehl-Legnodur-protect color, all dirt, protective polymer films and cleaning residues need to be removed through correct and proper stripping. This is the only way to guarantee the optimum adhesion of Kiehl-Legnodur-protect color.





## Application method

# Sealing with Kiehl-Legnodur-protect color

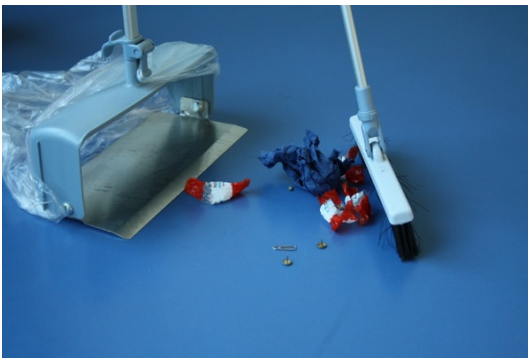


### Step 1: Protect nearby floor areas

Cover nearby floor areas, furniture, equipment, cable ducts etc. with foil and affix with water-resistant, residue-free, removable adhesive tape.

*Tip!*

*Use an old doormat to protect flooring. These mats absorb moisture, while the rubber side prevents moisture from reaching the floor.*



### Step 2: Preparation

Stack furniture where necessary. Sweep or use a damp cloth (gauze cloth) to remove coarse, loose dirt.



### Step 3: Dose, prepare ready-to-use solution

First add water, then add the correct amount of detergent, following the dosage instructions on the label. Always use cold water!

Follow operating instructions. Wear personal protective equipment.



The safety advice and instructions for use on the containers, the product information and the safety data sheet must be observed. Please also observe the cleaning and maintenance recommendations of the manufacturers as well as the instruction manual of the machines and equipment used.



## Application method

# Sealing with Kiehl-Legnodur-protect color



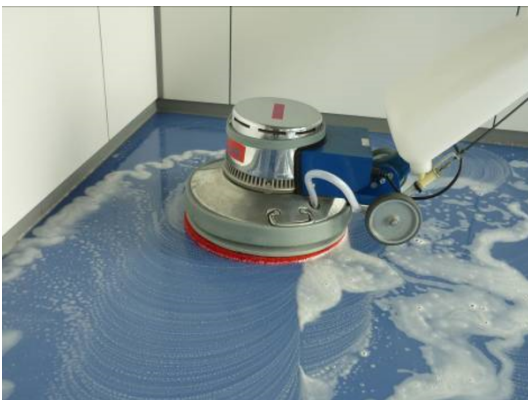
### Step 4: Distribute stripping solution

Cover a floor area of approx. 30–40 m<sup>2</sup> with plenty of cleaning solution. In the case of an excessive build-up of coatings, the stripping solution can be applied using a rotary floor machine and a suitable brush. Ensure complete coverage.



### Step 5: Allow the stripping solution to act

Leave the stripping solution to act for approx. 5–15 minutes, depending on the thickness of the coating. Do not allow the stripping solution to dry.



### Step 6: Mechanical scrubbing of the flooring

Use a brown 3M Superpad to scrub the flooring in even, overlapping strokes. Turn over or replace dirty pads with new ones. In the case of stubborn stains, add a little hot water from the soapy water tank.

#### Tip!

*You can tell that the maintenance film is dissolving by the surface becoming slippery. Areas that are still slippery after scrubbing still contain the remnants of maintenance film.*



### Step 7: Clean the edges

Edges, corners, rims and other areas inaccessible to the machine need to be manually treated using a hand pad and an edge-cleaning device. Stubborn encrusted dirt may need to be removed with a spatula.



The safety advice and instructions for use on the containers, the product information and the safety data sheet must be observed. Please also observe the cleaning and maintenance recommendations of the manufacturers as well as the instruction manual of the machines and equipment used.



## Application method

# Sealing with Kiehl-Legnodur-protect color



### Step 8: Remove the dirty solution

Use a squeegee and wet vacuum cleaner to remove the dirty solution. Always use a wet vacuum cleaner for highly absorbent floorings and structured surfaces. Do not allow the dirty solution to dry!

*Tip!*

*In case of excessive foam build-up, simply add a few squirts of defoamer into the suction hose of the wet vacuum cleaner when switched on.*



### Step 9: Rinse the surface

Cover the area with clear water and then remove with a wet vacuum cleaner. The remnant layers of dirt can be removed by scrubbing with a rotary floor machine, clear water and a fresh pad. Mop up the remaining moisture with a dry mop.



### Step 10: Clean the devices

Rinse the wet vacuum cleaner, rotary floor machine, bucket etc. and clean inside and out with a cloth. Clean the cable with a cloth and check for damage.

*Dirt and protective film residue can negatively impact the adhesion of Kiehl-Legnodur-protect color. Repeat the polymer removal process until all dirt residue has been removed.*

### Partial step: Scrape damaged areas

The filler is ideal for concealing deep scratches, drill holes or other small areas of damage on resilient floorings. Damage due to an improper substructure or issues with the building itself can be concealed but not resolved.



The safety advice and instructions for use on the containers, the product information and the safety data sheet must be observed. Please also observe the cleaning and maintenance recommendations of the manufacturers as well as the instruction manual of the machines and equipment used.



## Application method

# Sealing with Kiehl-Legnodur-protect color



### Step 11: Sand the damaged area

Thoroughly sand the damaged area with 80 grit sandpaper.



### Step 12: Remove dust

Use a vacuum cleaner, brush and pan or microfiber cloth to remove all sanding dust.



### Step 13: Fill the damaged area

Place filler tube in the silicon gun. Fill the damaged area with 3M filling compound. Remove any drops or unwanted filler immediately with paper towel.



### Step 14: Remove excess filler

Use a scraper to remove all excess filler.



The safety advice and instructions for use on the containers, the product information and the safety data sheet must be observed. Please also observe the cleaning and maintenance recommendations of the manufacturers as well as the instruction manual of the machines and equipment used.



## Application method

# Sealing with Kiehl-Legnodur-protect color

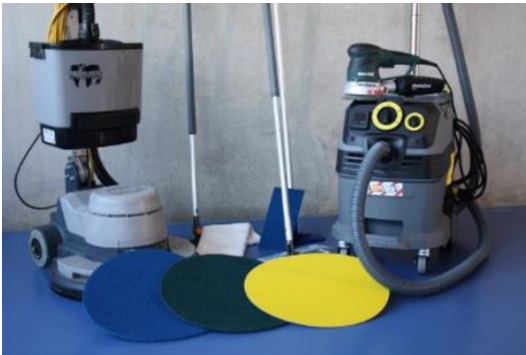


### Step 15: Drying time

Leave the filler to harden for approx. 30 minutes. Once the filler has dried, inspect the treated area and repeat the process if required.

### Partial step: Sand the flooring

Prior to applying the sealing, the entire flooring must be sanded matt using a Kiehl-Woodmaster-Pad (grit 100).



### Step 16: Ensure you have the machines and devices to hand

Rotary floor cleaner for dry cleaning, Kiehl-Woodmaster-Pads (grit 100), vacuum cleaner, hand pads.

Fit the rotary floor machine with vacuum attachment and suction ring. Affix additional weight if required. Recommended machine settings: approx. 165 rpm, at least 30 kg net weight and vacuum.



### Step 17: Mechanical treatment of the floor area

Move the machine with a Kiehl-Woodmaster-Pad over the floor in spiral, overlapping strokes until the embedded dirt has been removed and the floor has an even, matt finish. If necessary, turn over the Kiehl-Woodmaster-Pad or replace it with a new pad.



The safety advice and instructions for use on the containers, the product information and the safety data sheet must be observed. Please also observe the cleaning and maintenance recommendations of the manufacturers as well as the instruction manual of the machines and equipment used.



## Application method

# Sealing with Kiehl-Legnodur-protect color



### Step 18: Clean the edges

Edges, corners, rims and other areas inaccessible to the machine need to be manually treated using a hand pad and an edge-cleaning device.

Tip!

Delta or orbital sanders with a Kiehl-Legno-Pad are also suitable for cleaning rims, corners and edges.



### Step 19: Dust removal

Thoroughly vacuum the cleaned area with a vacuum cleaner or use a damp cloth to remove the dust.



### Step 20: Clean the devices

Clean the rotary floor machine, vacuum, etc. with a cloth. Check the vacuum bag and replace if necessary. Clean the cable with a cloth and check for damage. Cleaning cloths should be washed with laundry.



The safety advice and instructions for use on the containers, the product information and the safety data sheet must be observed. Please also observe the cleaning and maintenance recommendations of the manufacturers as well as the instruction manual of the machines and equipment used.



## Application method

# Sealing with Kiehl-Legnodur-protect color

### Partial step: Apply Kiehl-Legnodur-protect color



#### Step 21: Weather and general information

High levels of air humidity: Longer drying time!

Air humidity too low and temperatures too high: Drying time too short!



Avoid draughts! Switch off air conditioning and underfloor heating.



#### Step 22: Ensure you have the application tools to hand

Kiehl roller with bracket, telescopic pole, flat-headed brush, small sealing roller.

For optimum results, use a new sealing roller.



#### Step 23: Protect adjacent areas

Tape up skirting boards, radiator connections, furniture and adjacent floor areas with suitable adhesive tape.



#### Step 24: Mix Kiehl-Legnodur-protect color

Pour all of the Kiehl-Durator into the Kiehl-Legnodur-protect color canister. Carefully close the canister and shake well. Label the canister, e.g. -"Durator 9 am"



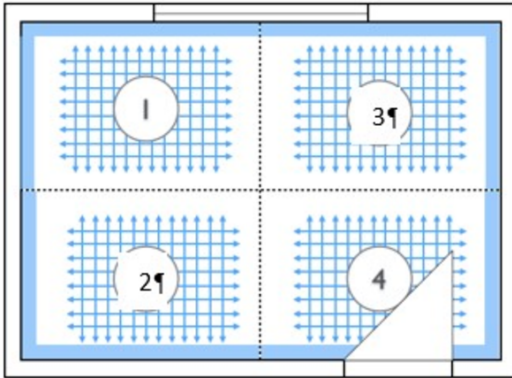
The safety advice and instructions for use on the containers, the product information and the safety data sheet must be observed. Please also observe the cleaning and maintenance recommendations of the manufacturers as well as the instruction manual of the machines and equipment used.





## Application method

# Sealing with Kiehl-Legnodur-protect color



### Step 25: Divide up the room

Divide up the room into smaller sections (1–4). Start with one of the two corners opposite the door and seal the edges (Step 23). Start from the room corner and cover one section at a time, each around 2 sq m. Pour some sealing on the floor and distribute it evenly using the small roller. To ensure an even covering, now start to apply the sealing to the surface. Always use the sealing wet on wet! Always carry out sealing work in teams of 2 or more people. Use additional teams for larger spaces.



### Step 26: Varnish the edges

Add some sealing to the floor and use the small sealing roller to distribute it. Avoid imperfections and puddles.



### Step 27: Varnish floor

Add approx. 200 ml of sealing to the floor. Soak the roller and distribute the sealing across the floor in a cross formation. Make sure there is sufficient product for the surface in question. Then apply the sealing to the edge areas.



### Step 28: Drying time

Leave the sealing to dry for at least 4 hours between applications. Close and seal the Kiehl-Legnodur-protect color canister between applications.



The safety advice and instructions for use on the containers, the product information and the safety data sheet must be observed. Please also observe the cleaning and maintenance recommendations of the manufacturers as well as the instruction manual of the machines and equipment used.



## Application method

# Sealing with Kiehl-Legnodur-protect color



### Step 29: Apply second sealing layer

Once the sealing has hardened, apply the second layer of sealing as described above.



### Step 30: Sprinkle Kiehl-Flakes

Shake Kiehl-Flakes before use! Apply Kiehl-Legnodur-protect color in sections with a roller and then sprinkle Kiehl-Flakes onto the wet film to achieve the desired look. Don't treat the sprinkled area with the roller or flat-headed brush.



### Step 31: Drying time

Leave the sealing to dry for at least 4 hours before continuing. Close and seal the Kiehl-Legnodur-protect color canister. Use a new sealing roller for the next application.

## Partial step: Apply Kiehl-Legnodur-protect



### Step 32: Mix Kiehl-Legnodur-protect

Pour all of the Kiehl-Durator into the Kiehl-Legnodur-protect canister. Carefully close the canister and shake well. Label the canister, e.g. "-Durator 9 am"

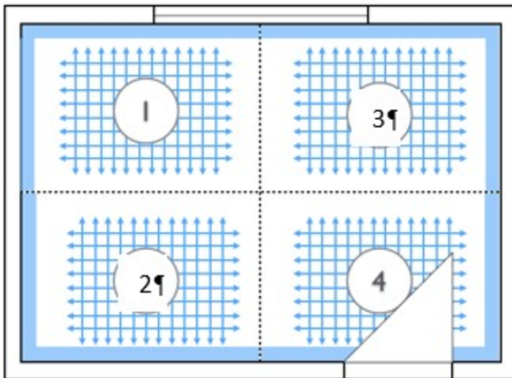


The safety advice and instructions for use on the containers, the product information and the safety data sheet must be observed. Please also observe the cleaning and maintenance recommendations of the manufacturers as well as the instruction manual of the machines and equipment used.



## Application method

# Sealing with Kiehl-Legnodur-protect color



### Step 33: Divide up the room

Divide up the room into smaller sections (1–4). Start with one of the two corners opposite the door and seal the edges (Step 23). Start from the room corner and cover one section at a time, each around 2 sq m. Pour some sealing on the floor and distribute it evenly using the small roller. To ensure an even covering, now start to apply the sealing to the surface. Always use the sealing wet on wet! Always carry out sealing work in teams of 2 or more people. Use additional teams for larger spaces.



### Step 34: Varnish the edges

Add some sealing to the floor and use the small sealing roller to distribute it. Avoid imperfections and puddles.



### Step 35: Varnish floor

Add approx. 200 ml of sealing to the floor. Soak the roller and distribute the sealing across the floor in a cross formation. Make sure there is sufficient product for the surface in question. Then apply the sealing to the edge areas.



### Step 36: Drying time

Leave the sealing to dry for at least 4 hours before continuing. Close and seal the Kiehl-Legnodur-protect canister. Use a new sealing roller for the next application.

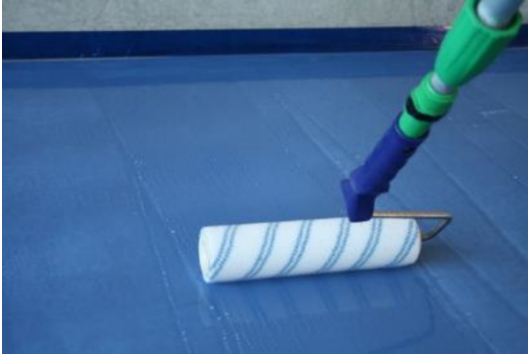


The safety advice and instructions for use on the containers, the product information and the safety data sheet must be observed. Please also observe the cleaning and maintenance recommendations of the manufacturers as well as the instruction manual of the machines and equipment used.



## Application method

# Sealing with Kiehl-Legnodur-protect color



### Step 37: Apply another sealing layer

Once the sealing has hardened, apply another layer of sealing as described above. If more than 24 hours pass between the first and second applications, the surfaces need to be pre-treated by mechanical dry cleaning and a Woodmaster-Pad-120 prior to the second application.

### Step 38: Clean tools

Clean all the required tools thoroughly with water.



The safety advice and instructions for use on the containers, the product information and the safety data sheet must be observed. Please also observe the cleaning and maintenance recommendations of the manufacturers as well as the instruction manual of the machines and equipment used.